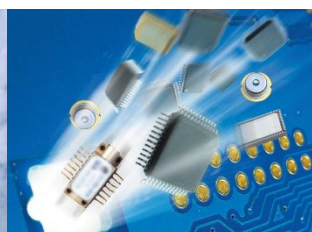
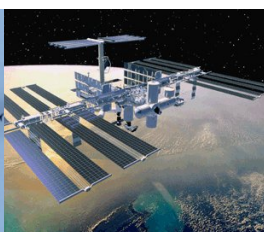
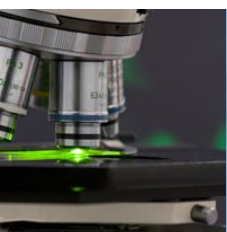
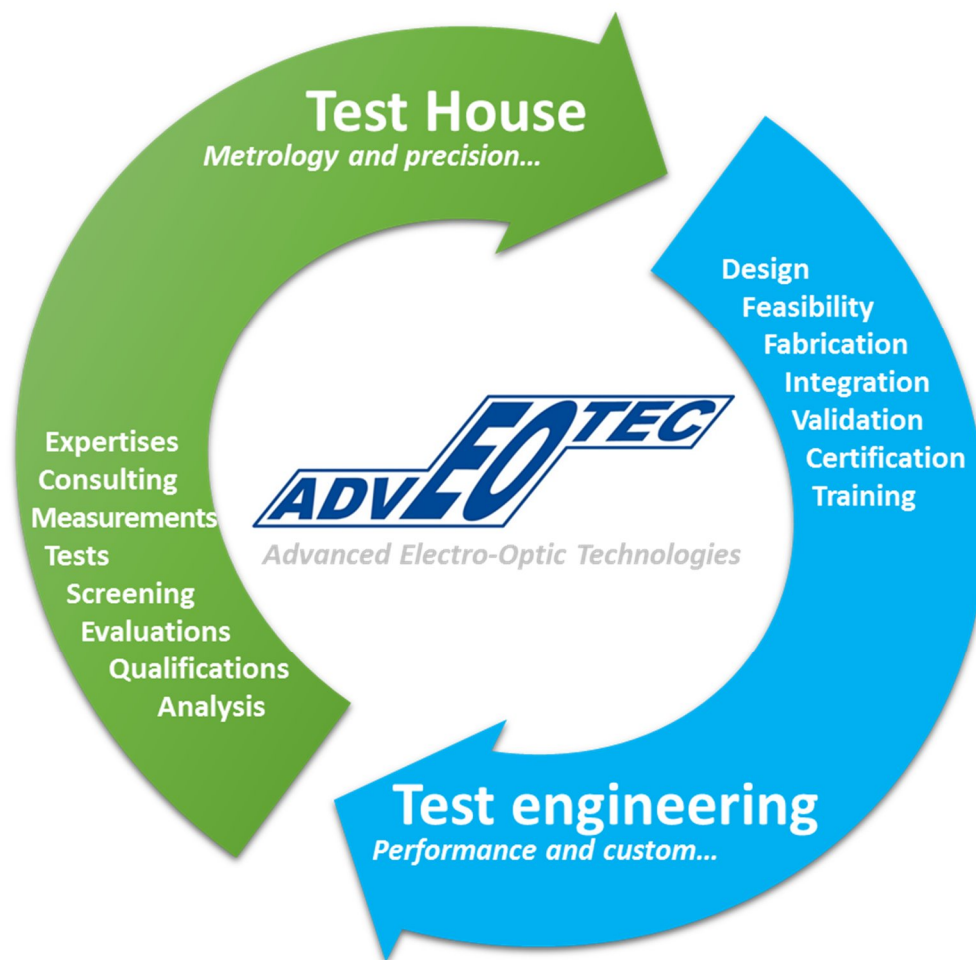


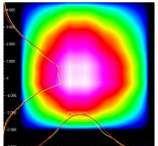
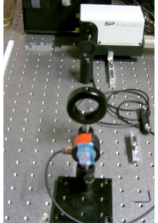
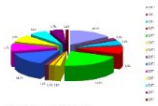
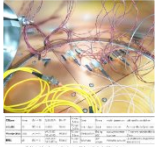
Measurement and Test House for optoelectronic components and systems

Optoelectronics systems measurements and test engineering



Optoelectronic components tested in harsh and demanding environment

AdvEOTec's Test House is expert in the **reliability of optic, electronic, optoelectronic and photonic components**. Access is given to a modern laboratory dedicated to **measurement, tests, reliability evaluation, qualification and analysis** for your applications...



Since 2003, AdvEOTec has been providing services as **measurements, tests and expertise** on optoelectronic and photonic components and systems within characterization, evaluation and qualification programs...

Its laboratory is dedicated to severe and demanding environment: **Space, Aeronautics, Industry, Defense, Energy, Transportation, Telecommunications and Radiation**.

Technical and economic studies

- **Technical and market analysis**
- A network of qualified partners
- **Expertise** new optoelectronic technologies
- Component procurement

Evaluation

- **Characterization of optoelectronic components and systems**
- Metrology benches, Metrology systems, standard and specific procedures for your application
- **Evaluation** of critical points
- Design, construction and validation of benches, systems and tools
- **Compliance analysis**
- Development of screening plan and qualification program

Screening

- **Inspections, measurements and tests** under **optical, thermal, electrical or mechanical stresses**
- Burn-in and infant mortality screening
- Component traceability by lot

Qualification programs : Test, Measurement, Characterization and Monitoring

- **Tests : environmental, vacuum, mechanical, radiations** ionizing dose and non-ionizing dose
- Optical (UV, Visible, IR), electrical (noise, RF and BF), environmental (moisture, relative humidity, random vibration, mechanical shocks, thermal cycling under vacuum, ...) **characterization and performance monitoring**
- **Reliability** : MTF (Mean Time To Failure), FIT (Failure In Time)

Integration and storage

- **Control** and report before shipment
- **Storage** in control environments with periodic characterization verifications
- **Obsolescence management**

Your components and systems from UV to Infrared...

- **Emitters**: laser diodes, LEDs, SLEDs,...
- **Receivers**: CMOS, CCD, phototransistors (single and matrix), photodiodes (single and matrix),...
- **Optical functions**: electro-optical modulators, transceivers, optocouplers, doublers,...
- **Fiber passive components**: couplers, Bragg grating, isolators, cables, multiplexers, filters, optical switch,...
- **Optical components**: Lens, mirrors, optical window,...
- **Optical and electrical connectors**
- **Subsystem and system optoelectronics and photonics: optical sources and detectors,...**

More information read the documentation AdvEOLab : Tests and Measurements of AdvEOTec



Engineering tests of your integrated optoelectronic systems

AdvEOTec **designs** and **develops** measurement and evaluation systems for optic, electronic, optoelectronic and photonic components and systems: **test benches, positioning systems, optical characterizations, integration systems, thermal and lighting simulator...**

AdvEOTec gathers the expertise of its experts, its assembly shop, modern laboratories and expertise of its teams and partners to design, implement and validate your test and measurement systems.

Research and development

System block diagram

- Verification specifications subsets
- Feasibility validation, demonstration

Optical, electrical, mechanical and thermal design

Design

Bill of material (BOM)

- Modelling and design
- Schemes subsets of the system
- Definition of validation tests and recipes
- Evaluation of technological risks and simulations

Software engineering

Software definition (IHM, algorithms ...)

Acquisition and processing raw data

Programming in C++, C#, Visual studio, Labview, LabWindows,... et microcontrollers

- **Automatizing standard equipment: sources, displacement sensors, TEC (Thermoelectric Coolers),...**
- **ATE (Automatic Test Equipment),...**

Procurement and control

Selection and follow-up of suppliers and subcontractors

- Equipment procurement with verification and control

Production, assembly, installation and set up

Integration of the complete system

Programming and automation

Manufacture and validation subsets (PCB, thermomechanical support,...)

- **Development of optical, electrical, optoelectronic, photonic, thermal, visions, dedicated measurement and test systems,...**

Procedure, qualification and validation system

Metrological validation

- Procedure validation

Training and implementation

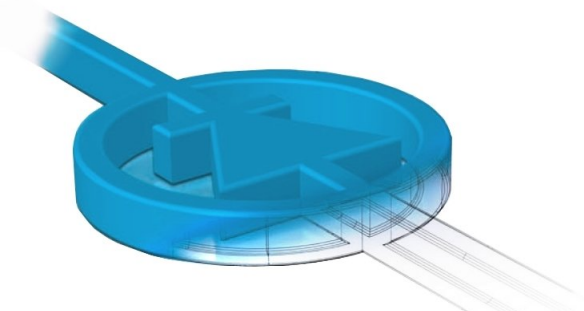
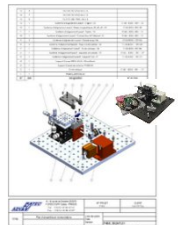
Manufacturing files, technical and user manuals, certificates,...

Specific packaging (dry air, nitrogen,...)

Installation at user site

Training and assistance to implementation

- Maintenance program



OUR VALUE PROPOSITION

Experts and independent European laboratory

The flexibility of an SME

Over 10 years of expertise in optoelectronic components and in systems with optic, electronic and optoelectronic

Our methods and procedures have been audited and validated by our customers (Space, Aeronautic, Military, Telecommunications...).

Metrological testing procedures

Measurement processing & result analysis

The implementation of measurement benches and test facilities **dedicated to your application.**

A project manager for your program and a planning with milestones and deliverables

Management of technological risks

Technical and technological advices

Confidentiality!

OUR FACILITIES

Laboratory **400 m²**

More than 300 measurement systems, characterization and real-time monitoring systems (optical, electrical, thermal ...)

Primary and secondary vacuum chambers (storage and thermal cycling), a few dedicated to optoelectronics

Classroom environment 100 (ISO 5)

Laboratories comply with the IEC 61340-5-1&2 standards for ESD (Electro Static Discharge) protection.

Climatic chambers, damp heat storage, temperature cycling

Mechanical tests: constant acceleration test bench, PIND tester / vibrator, fiber pulling bench

ESD test equipment (Electrostatic discharge), COD (high optical power until optical failure)

R&D

FP7 and French (FUI, ANR) projects

Space projects: **Euclid, Taranis, Pharaon, Chemcam**

Jasmin et Marise projects

Internal R&D programs

Other projects under non-disclosure agreement (NDA)

PARTNERSHIPS

We are able to perform mixed tests, we install and use our equipment in our partners' premises:

Mechanical tests: **vibration** and **shock, radiation test** (ionizing and non-ionizing dose), **cryogenic**, Electromagnetic compatibility (EMC), **physical analysis**: X-ray radiography, leak test, DPA,...

SOME REFERENCES

CNES, ESA, SAFRAN, BERTIN TECHNOLOGIES, AIRBUS GROUP / DEFENSE and SPACE , THALES, CEA, SAGEM, SODERN, AIRBUS, OPTOI, THALES-ALCATEL 3-5Lab, RADIAL, AMPHENOL, MBDA, ...

COFOUNDING MEMBER OF

- **ISROS** : International Society on Reliability of Optoelectronics for Systems
- **Elyzee consortium** : multi-skilled group of companies, developing complete custom solutions, addressed to major industrial markets

AdvEOTec

6-8 rue de la Closerie – Lisses

ZAC Clos aux Pois – CE5270

91052 EVRY Cedex - FRANCE

Tél. +33 (0)1 60 86 43 61

www.adveotec.com

salesdpt @ adveotec.com

S.A.S. au capital de 72000 euros – 449 130 467 RCS EVRY – APE 7490B

